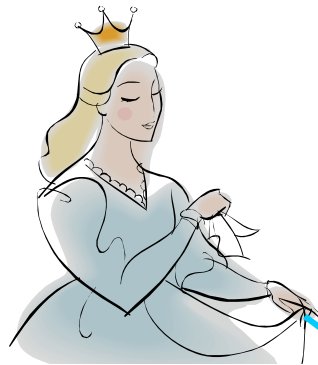


ON THE STAFF:



Denmark Princess

Note D

ON THE KEYBOARD:



Space note D, space note D, I love D, it sounds like DEAR!

Note D is a *Denmark Princess* note. It hangs from the *first line* of the staff.

Assignments:

- 1) Find all notes D on the keyboard (in both high and low registers);
- 2) Add *stems* to the notes D on the staff above. Which *note values* did you get? _____ and _____
- 3) Add the *time signature* 4/4 after treble clef; then add the *bar lines*. How many *measures* did you get? _____
- 4) Clap and count the song you just created; write the counts above the notes;
- 5) Play the *note D* on the keyboard; use finger 2, R.H., for the first time, and finger 3, R.H., for the second time.