

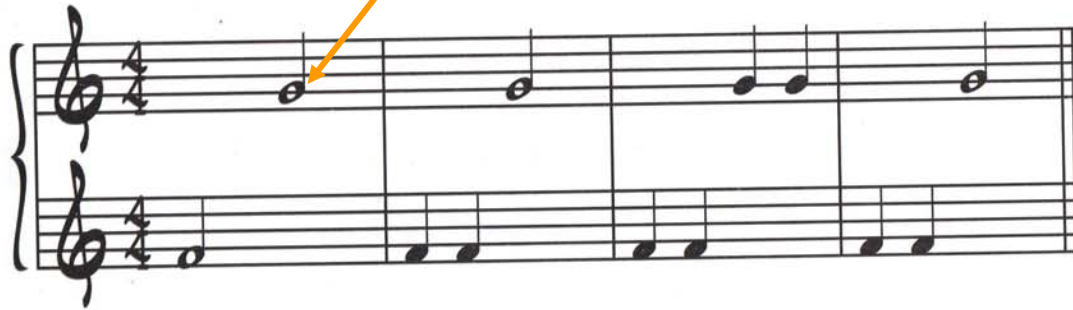
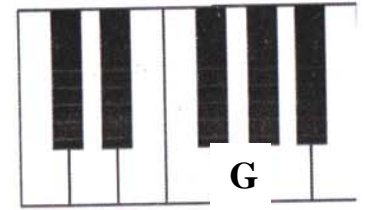
ON THE STAFF:



Guinea Princess

Note G

ON THE KEYBOARD:



Counts:

Note names:

Note G is a *Guinea Princess* note. It sits on the *second line* of the staff.

Assignments:

- 1) Find and *circle* the *note G* in the song above; is this *line* or *space* note? (Circle the correct answer.)
- 2) *Clap* and *count* the song above; write the *counts* under the staff;
- 3) *Name* the notes in the song; write the *names* under the counts;
- 4) *Play* the song on the piano with BOTH hands: the upper staff – the right hand plays; the lower staff – the left hand plays; use your *middle fingers*; which hand plays the note G in the song? _____ Play and count the first time, play and name the notes the second time.
- 5) *Sing* the song naming the notes (GET A BONUS!!)